

Slimy Cell

Komal Zahrah, Francesca Luca

Center for Molecular Medicine and
Genetics

Wayne State University

fluca@wayne.edu

Animal Cell Slimy Model

Materials

Slime

Clear Washable PVA Glue

Slime activator

Nucleus – Cotton Ball

Endoplasmic reticulum – Rubber band

Ribosome – Glitter

Golgi Body – Pipe Cleaner

Mitochondria – Pom Poms

Microtubules – Straws

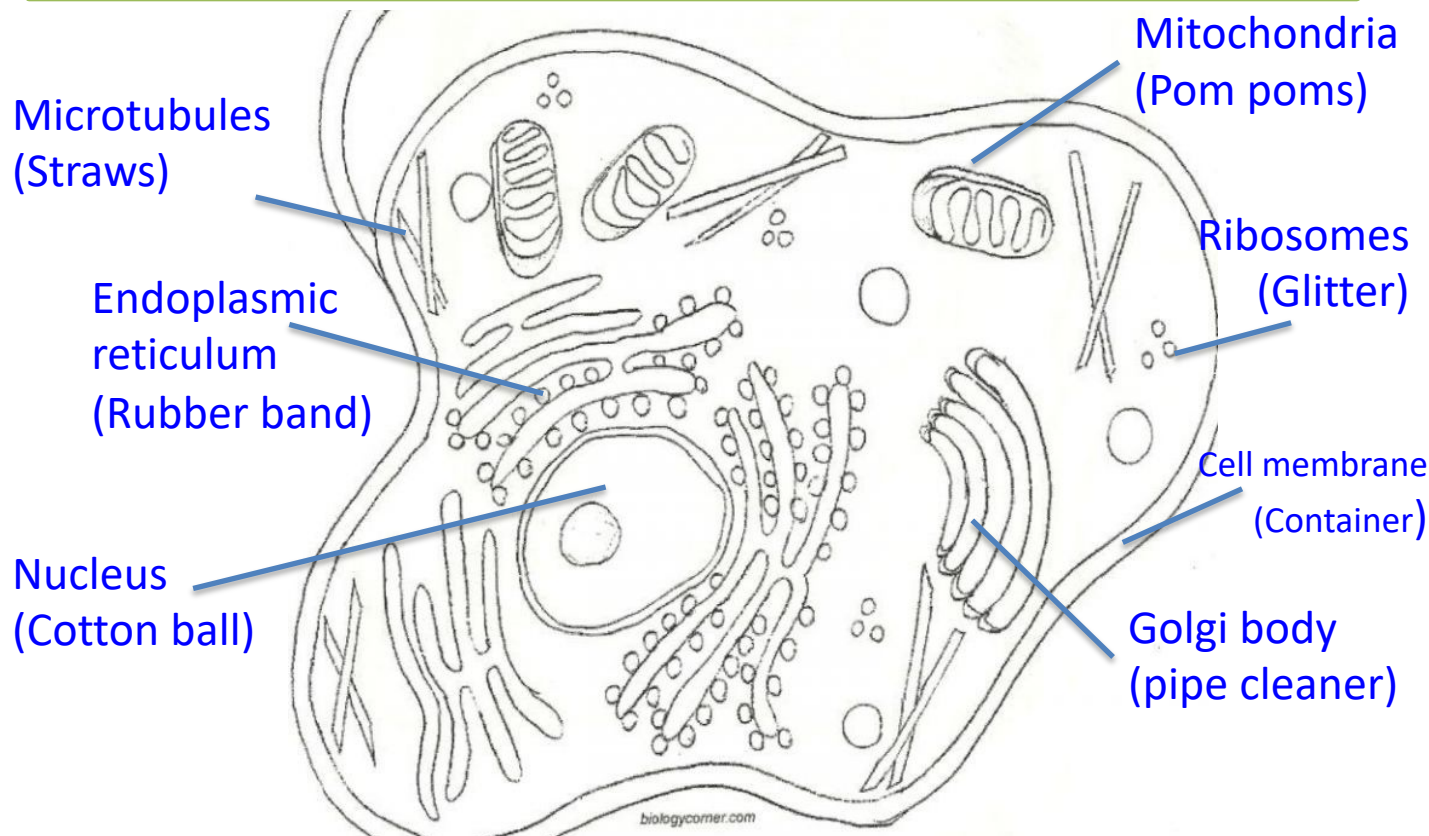
Procedure

First make the cytoplasm (slime)

1. Measure 1/2 cup of glue and add in the plastic container.
2. Slowly stir in 1 tablespoon of slime activator
3. Mix the slime

When the cytoplasm is ready, you can assemble your cell

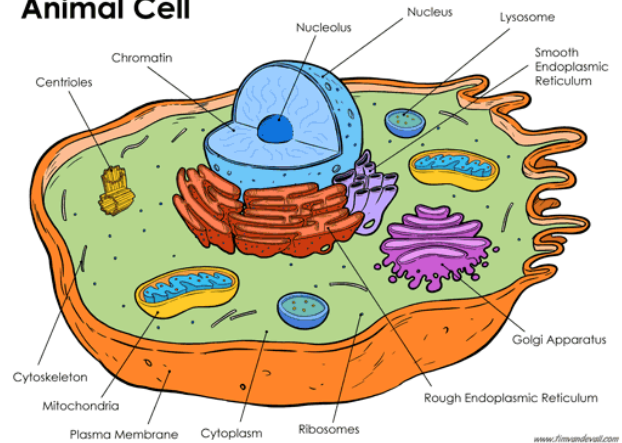
Put the materials in the slime like the picture below



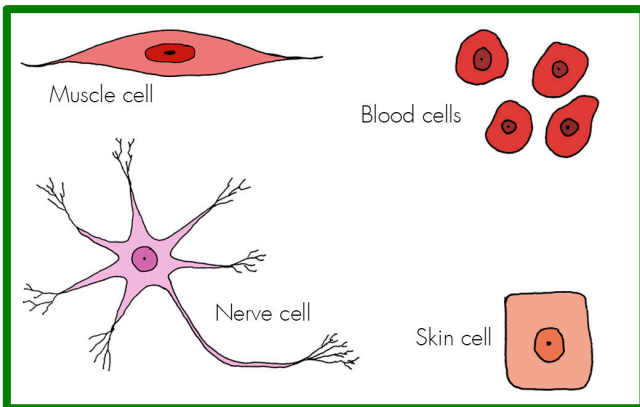
Animal cell

Cells are found in all living things. **Animal cells** are even found inside of you! They are **Eukaryotic cells** meaning they contain a nucleus and organelles, and are enclosed by a plasma membrane.

Animal Cell



Some types of human cells



Some organelles in the cell:

Nucleus: Library of the cell. Stores instructions to make everything (DNA).

Endoplasmic reticulum: It's the cell's factory, where proteins and other molecules are made.

Ribosome: Reads instructions and makes proteins.

Golgi apparatus: Modifies proteins (adds useful decorations).

Mitochondria: Power house of the cell. Where energy is made.

Microtubules: The skeleton of a cell.

Cells Fun Facts:

1. Plant cells can make their own food, while animal cells can't.
2. Cells can repair themselves.
3. Humans shed 30,000 dead skin cells every minute.

"Silly Science" is
organized by
the Luca Lab.
www.lucalab.org



School of Medicine

CENTER FOR
**MOLECULAR MEDICINE
AND GENETICS**

Credits

- Animal cell colored picture (<https://www.timvandevall.com/animal-cell-diagram/>)
- Different kind of cells
(https://www.bing.com/images/search?view=detailV2&id=A968756D77B53A6AA06A2AC8485756951DFA60AD&thid=OIP.WwBukrPJtyTOflhO1Q2ZPAHaFr&exph=1227&expw=1600&q=types+of+human+cells&selectedindex=0&qft=+filterui%3acolor2-color+filterui%3alicense-L2_L3_L4_L5_L6_L7&ajaxhist=0&vt=0&eim=0,1,2,6)
- Animal cell facts: https://www.ducksters.com/science/the_cell.php
- Animal cell slimy model idea: <https://royalbaloo.com/biology-cells-with-slime/>
- How to make slime: <https://littlebinsforlittlehands.com/recipe-for-slime-uk/>
- Line art of animal cell (site says any modifications must be indicated):
https://www.biologycorner.com/worksheets/cellcolor_old.html